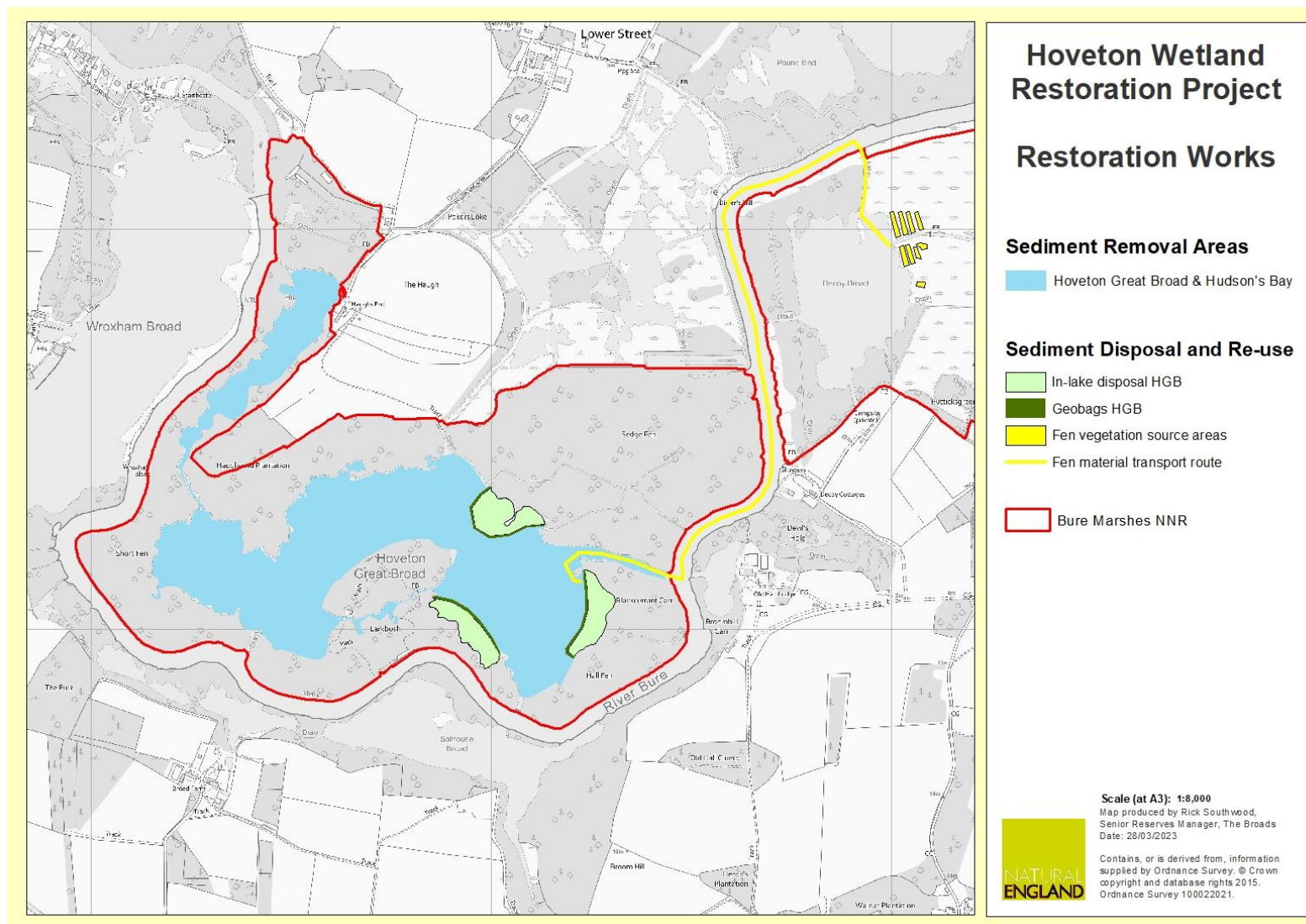


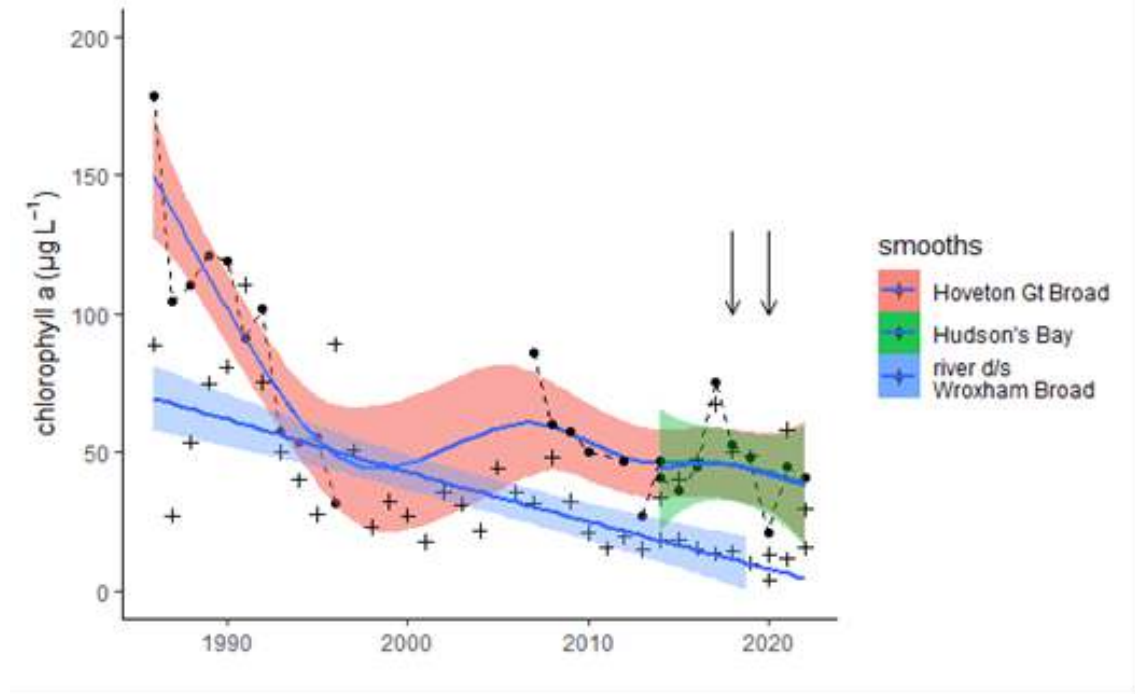
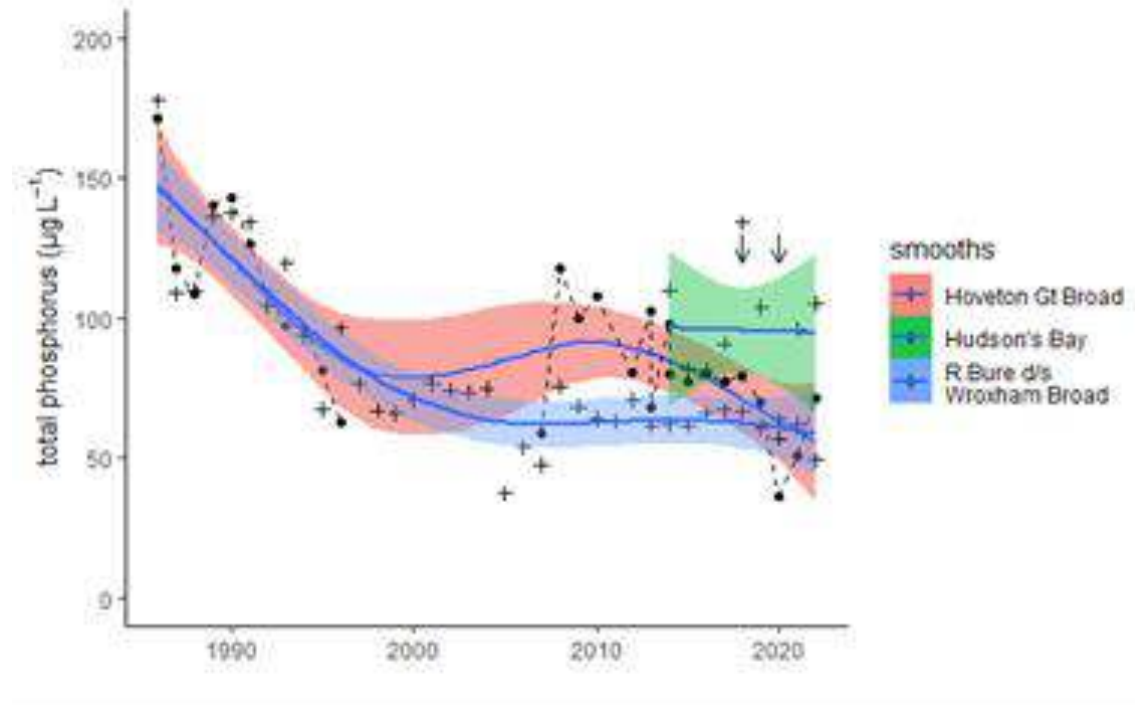
Underwater recovery

- Following the sediment removals, and aided by the flushing effect from the River Bure, (with improved water quality) we have begun to see the plant recovery that we were hoping to achieve...



Partner Organisations

Water Data ... what is it telling us ?



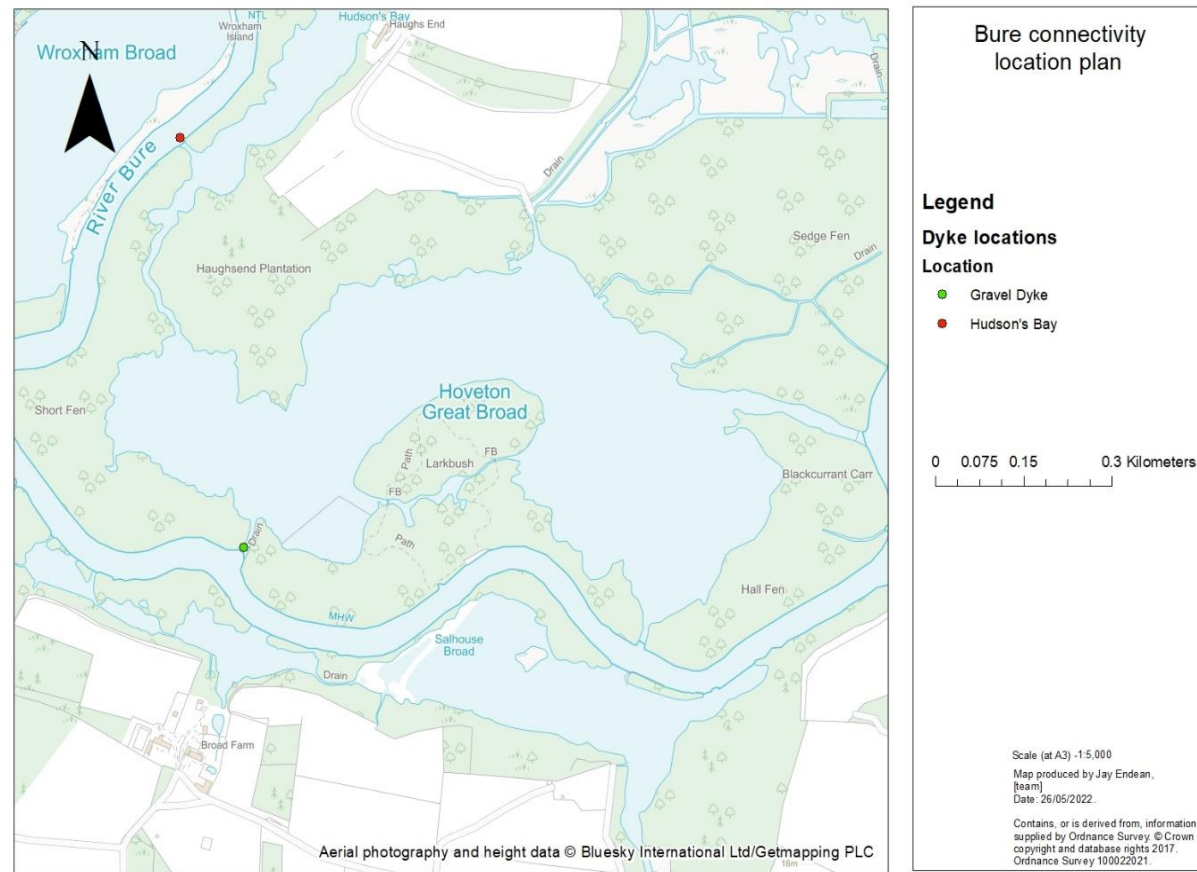
Project monitoring since 2015 has amassed a wealth of data. In both Hoveton & Hudson's Bay we are now seeing significant reductions in phosphorus which is leading to better water quality.

Partner Organisations



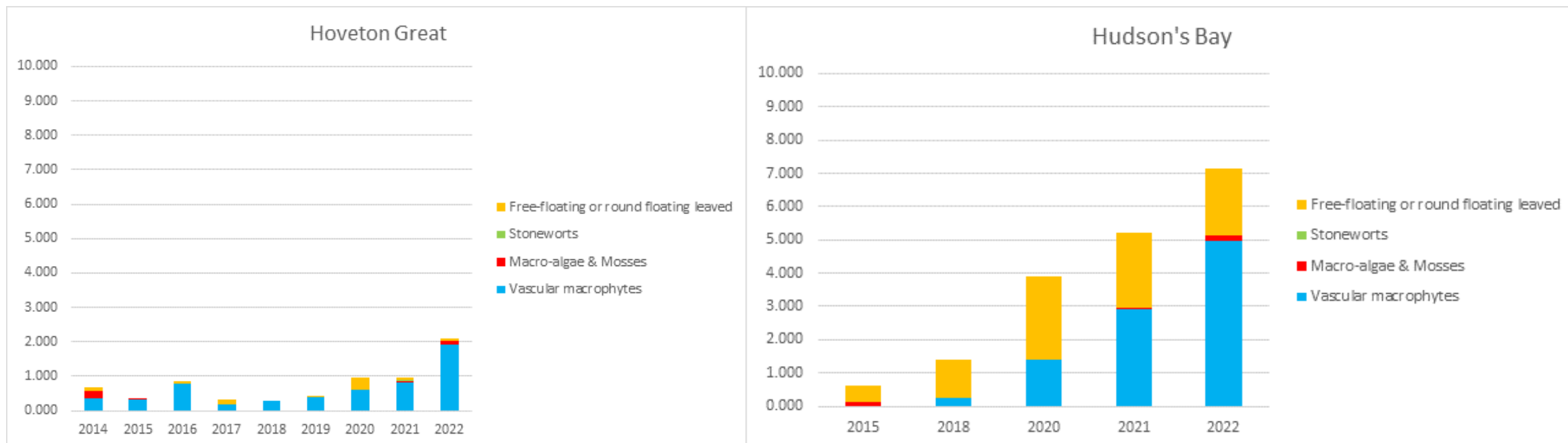
Partner Organisations

Dykes opening & flushing of the broad



The project is now pausing its plans to biomanipulate and instead we are opening two silted up dykes to flush the broad through with better quality river water –

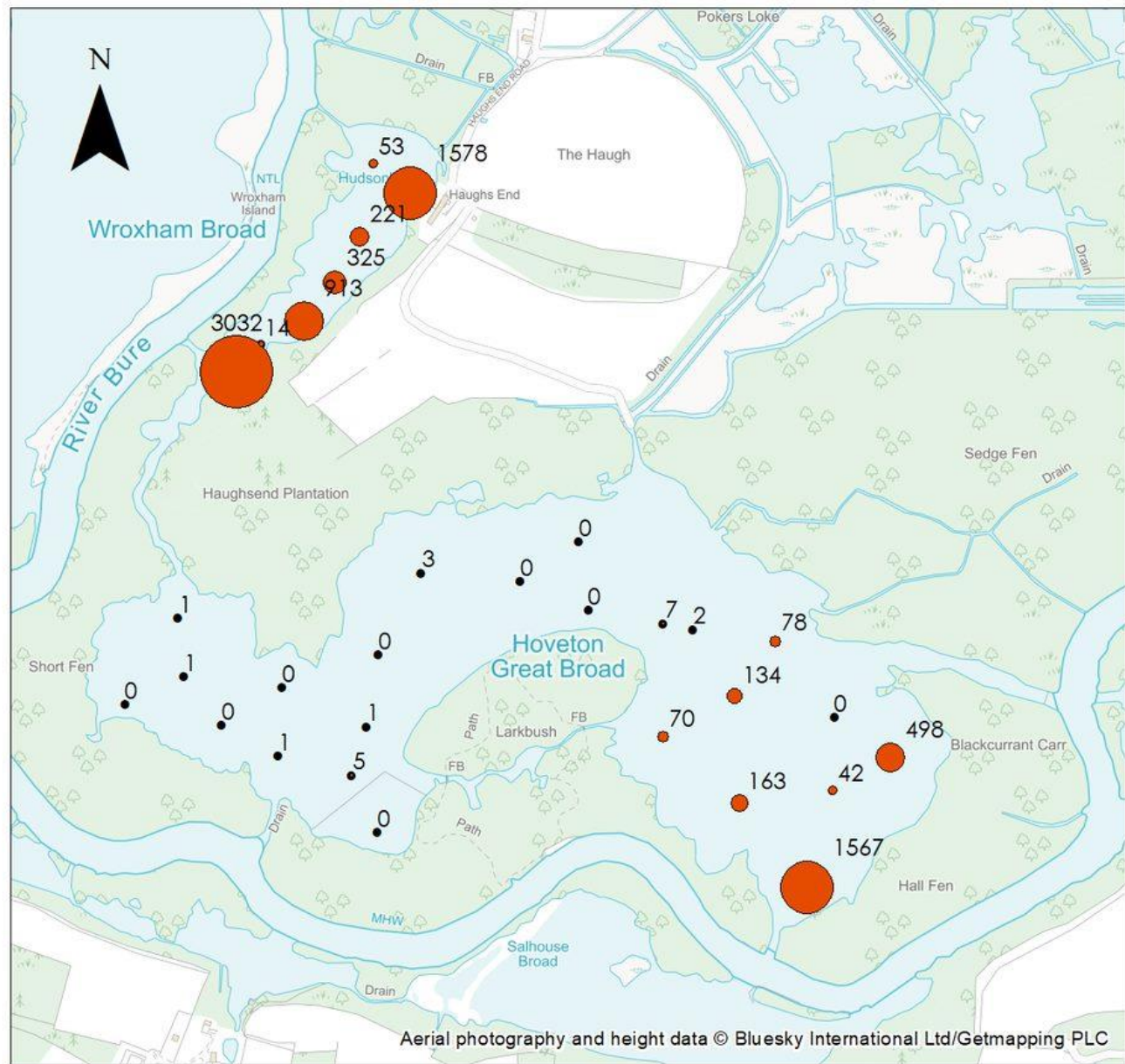
Plant Recovery ...



2022, we saw significant plant growth across both Hoveton Great Broad and Hudson's Bay...

Partner Organisations

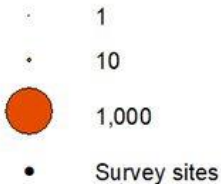




Weight of macrophytes sampled
at 30 sites in Hoveton Great Broad
and Hudsons Bay September 2022.

Legend

Total weight in grams



Total weight in grams of all species recorded
at each site is included as a label.

1:5,000

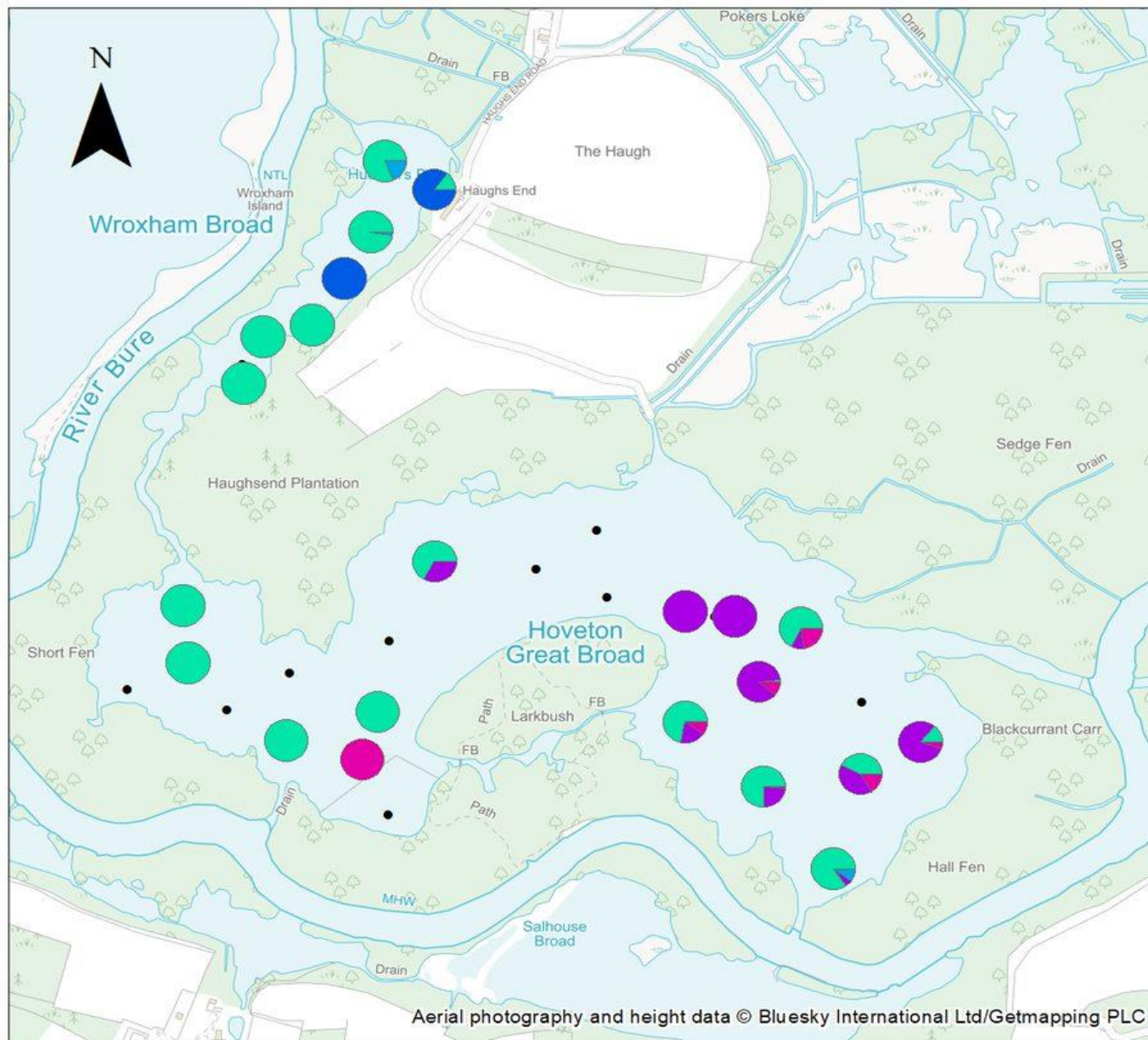
0 0.05 0.1 0.2 Kilometers

Map produced by Jay Endean,
Hoveton Great Broad Restoration Project.
Date: 13/12/2022

Contains, or is derived from, information
supplied by Ordnance Survey. © Crown
copyright and database rights 2017.
Ordnance Survey 100022021.

Partner Organisations





Macrophyte species
recorded at 30 sites in Hoveton
Great Broad and Hudsons Bay
September 2022.

Legend



- Ceratophyllum demersum*
- Elodea nuttallii*
- Filamentous algae
- Nymphaea alba*
- Potamogeton pectinatus*

- Survey sites

Pie charts are based on
weight in grams of each species.

1:5,000

0 0.05 0.1 0.2 Kilometers

Map produced by Jay Endean,
Hoveton Great Broad Restoration Project.
Date: 13/12/2022
Scale (at A3) - 1:5,000

Contains, or is derived from, information
supplied by Ordnance Survey. © Crown
copyright and database rights 2017.
Ordnance Survey 100022021.

Partner Organisations